



ORBITAL HYDRAULIC MOTOR

MODEL BMM



WWW.OLEODINAMICAMOZIONI.IT

BMM INTRODUCTION

THIS SERIES OF MOTOR, WITH ITS SHELL MADE OF DUCTILE CAST IRON OF ADEQUATE INTENSITY, CAN BE APPLIED TO SITUATIONS WITH LESS LOAD AND INTERVAL OPERATION, WIDELY TO AGRICULTURE, FORESTRY, PLASTICS, MACHINE TOOLS AND MINMACHINES ETC.



1. WITH THE AXIAL OIL DISTRIBUTION STRUCTURE, IT IS OF SMALLER, HIGH EFFICIENCY AND LONG LIFE.
2. SHAFT SEAL CAN BEAR HIGH PRESSURE OF MOTOR OF WHICH CAN BE USED IN PARALLEL OR IN SERIES.

BMM TECHNICAL DATA

TYPE		BMM - 8	BMM - 12.5	BMM - 20	BMM - 32	BMM - 40	BMM - 50
DISPLACEMENT (ML/R)		8.2	12.9	19.9	31.6	39.8	50.3
MAX.PRESSURE. DROP (MPA)	CONT.	10	10	10	10	9	7
	INT.	14	14	14	14	14	14
	PEAK.	20	20	20	16	16	16
MAX.TORQUE (N·M)	CONT.	11	16	25	40	45	46
	INT.	15	23	35	57	70	88
	PEAK.	21	33	51	64	82	100
MAX.SPEED (CONT.) (R/MIN)		1950	1550	1005	630	500	395
MAX.FLOW (CONT.) (L/MIN)		16	20	20	20	20	20
MAX.OUTPUT.POWER (CONT.) (KW)		1.8	2.4	2.4	2.4	2.2	1.8
WEIGHT (KG)		1.9	2	2.1	2.2	2.3	2.4

INTERMITTENT OPERATION THE PERMISSIBLE VALUES MAY OCCUR FOR MAX. 10% OF EVERY MINUTE.

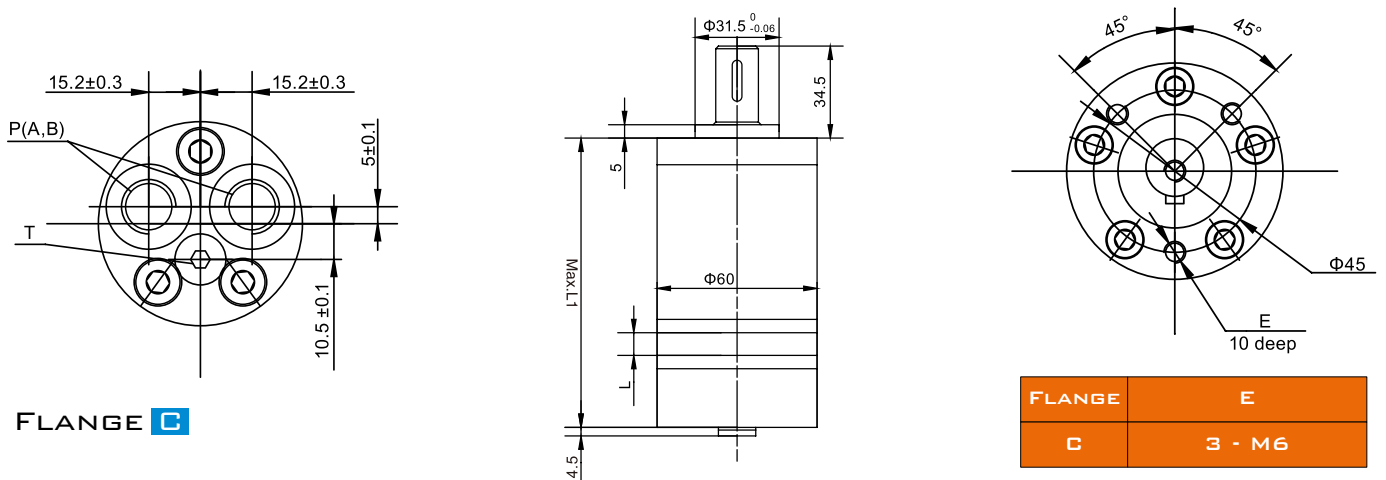
PEAK LOAD: THE PERMISSIBLE VALUES MAY OCCUR FOR MAX. 1% OF EVERY MINUTE.



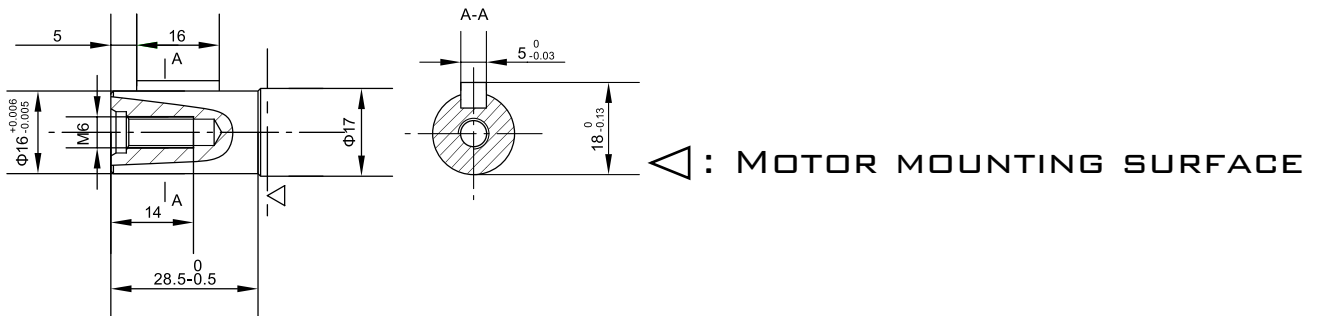
BMM INSTALLATION

TYPE	BMM - 8	BMM - 12.5	BMM - 20	BMM - 32	BMM - 40	BMM - 50
L	3.5	5.5	8.5	13.5	17	21.5
L1	104.5	106.5	109.5	114.5	118	122.5
L2	107	109	112	117	120.5	125

END PORT Y*



BMM SHAFT VERSION



P1: Ø 16 CYLINDRICAL SHAFT,
PARALLEL KEY 5X5X16



ORBITAL HYDRAULIC MOTOR

ORDER CODE

<p>SERIES BMM</p>		<p>ROTATION DIRECTION OMIT = STANDART L = OPPOSITE</p>	
<p>DISPLACEMENT 8 12.5 20 32 40 50</p>		<p>SPECIAL FEATURES OMIT = STANDART</p>	
<p>OUTPUT P1 = $\varnothing 16$ CYLINDRICAL SHAFT, PARALLEL KEY 5X5X16</p>		<p>PORTS PORTS(A,B)(DEEP) DRAIN PORT T(DEEP) END PORT Y* Y1 = G3/8(12) G1/8(8)</p>	
		<p>FLANGE C = 3 - M6 FLANGE, PILOT $\varnothing 31.5$</p>	