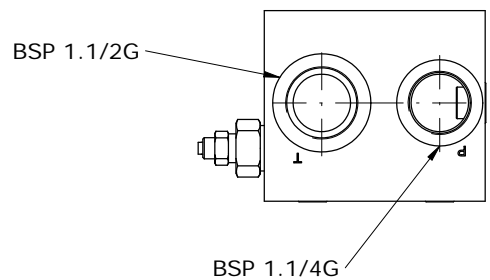
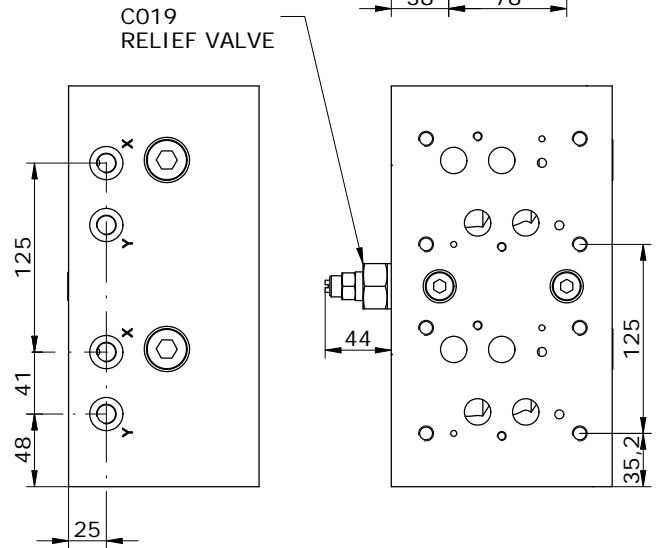
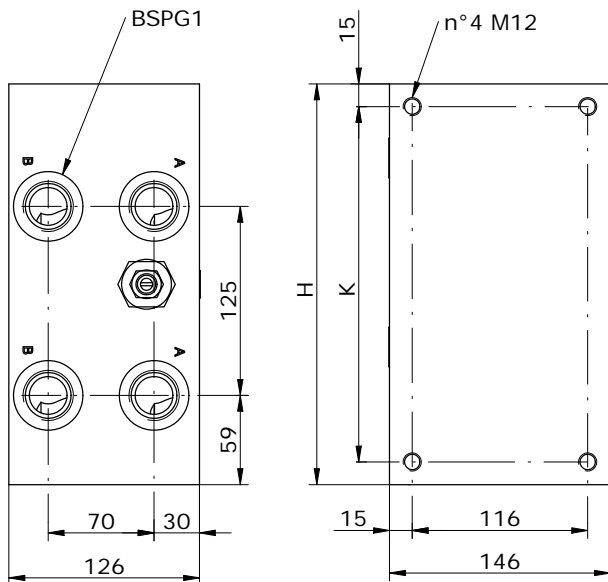
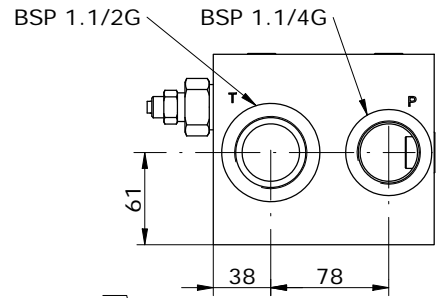
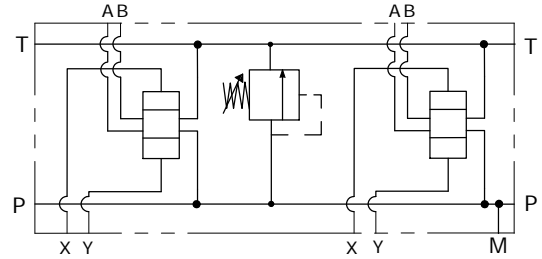


Schema idraulico  
 Hydraulic diagram



POS.	02	03	04	05
H	265	390	515	640
K	235	360	485	610

**E\_ 16 - 06 - 100 -** \_\_\_\_\_

S = STEEL

MOUNTING POSITIONS: 02 ÷ 05

0 = WITHOUT RELIEF VALVE  
 1 = 10-245 bar  
 2 = 240-350 bar

0 = WITHOUT RELIEF VALVE  
 1 = WITH RELIEF VALVE  
 2 = RELIEF VALVE READY